

Te Rautaki Whanaketanga ki tua a Wairarapa- Wellington- Horowhenua - HUKI

# **Wairarapa-Wellington-Horowhenua Future Development Strategy Consultation Overview Document**

**DRAFT**



# Nau mai, Haere mai and welcome to public consultation on the draft Wairarapa-Wellington-Horowhenua Future Development Strategy.

## How do you see our region changing over the next 30 years? – Have your say

We want your feedback on our approach to how and where the Wairarapa-Wellington-Horowhenua region should grow and change.

Ka ora te wai  
Ka ora te whenua  
Ka ora te whenua  
Ka ora te tangata  
**Mo te iti – mo te rahi**

*If the water is healthy  
the land will be nourished.  
If the land is nourished  
the people will be provided for.  
**For the little – for the large***

### What's in this Document?

**This document is an overview of the draft Future Development Strategy.**

The full document and the reports below can be found at: [wrlc.org.nz/future-development-strategy](http://wrlc.org.nz/future-development-strategy)

In this document you'll find:

- a high-level summary of what the Draft Future Development Strategy is.
- key maps and diagrams
- a feedback form where you can provide your views on how this “big picture” approach and let us know if you want to attend a hearing.

## Why is a Future Development Strategy relevant to you?

We want your feedback on our approach to how and where the Wairarapa-Wellington-Horowhenua region should grow and change over the next 30 years. The draft Future Development Strategy plans for a population increase of 200,000 people over the next 30 years. It is important to plan for where future generations and our new neighbours will live, work and play.

The draft Future Development Strategy looks at the big issues around future development that we need to address as our population increases in the decades ahead, such as housing and business capacity, transport, employment, the environment, building resilience to natural hazards, and making the best use of infrastructure. We need to plan so as to have the best impact on all our wellbeing and the wellbeing of the urban and natural environments around us.

We are stronger together. Collaborative planning is required to:

- become more resilient to natural hazards and climate change;
- improve access to employment, education and housing;
- reduce carbon emissions, and
- create a sustainable and prosperous future for our children's children.

The main proposal in this draft Future

Development Strategy is to concentrate most of our development in existing urban areas in our towns and cities with good current and future transport links. This will help our population live low carbon lifestyles and get around more easily. Our approach also ensures we protect our natural areas and food production land from encroachment. The draft Future Development Strategy also helps us plan for infrastructure and ensure it is funded to enable development.

## Who has prepared the Future Development Strategy?

The draft Future Development Strategy has been prepared as a collective effort by all the councils in the Wairarapa-Wellington-Horowhenua region, WRLC iwi partners and central government - called the Wellington Regional Leadership Committee (WRLC).

## Do you want more detail than this document?

We strongly encourage you to read the information in this document before answering the questions. If you want more detail the full version of the Draft Future Development Strategy and the technical reports listed below contain more information that can help inform your submission.

### **Draft Future Development Strategy**



This is the full version of the strategy. The Future Development Strategy is a picture of where we collectively (as a region) have agreed we want to focus our efforts by working together on housing and business development including supporting infrastructure. The draft Future Development Strategy is framed by a vision, strategic direction, iwi values and aspirations, and key priorities for how we plan to grow in our urban areas.

### **Foundation Report**



Provides a summary of the context for our strategy, including the strategic and policy context, our current state and the opportunities and challenges facing the region now and into the future.

### **Iwi values and aspirations report**



This report acknowledges all the mahi done in partnership with the WRLC iwi partners and provides more detail on the statement of iwi and hapū values and aspirations for urban development for the Wairarapa-Wellington-Horowhenua region.

### **Housing and Business Assessment (HBA) 2023**



This report assesses the demand for housing and business land and determines how much development capacity is needed to meet that demand.

### **Constraints Report**



Identifies constraints on development, updating previous mapping with the latest information.

### **Scenario Evaluation Report**



Considers the advantages and disadvantages of different spatial scenarios for how the region could grow.

### **Engagement Report**



Summarises the engagement undertaken to inform the development of the strategy, including with our iwi partners, developers, infrastructure providers, local and central government, and youth representatives.



# Overview of the Future Development Strategy

This section gives you an overview about what the Future Development Strategy is that can help inform your submission. Full reports can be accessed from [wrlc.org.nz/future-development-strategy](http://wrlc.org.nz/future-development-strategy)

## What is the Future Development Strategy and why are we developing it?

### PURPOSE OF THE STRATEGY

The Wairarapa-Wellington-Horowhenua Future Development Strategy<sup>1</sup> describes how, through working together we will deliver well-functioning urban environments in our existing and future towns and cities and provide enough development capacity in the next 30 years to meet our expected population growth. In particular it identifies where future housing and business development should occur by outlining:

- broad locations for homes and businesses, and the social and physical infrastructure needed to support them.
- the areas we should not develop, so that we can limit risks to our communities and infrastructure and protect our taonga.

The Future Development Strategy:

- provides us with a foundation for collaboration across the region to plan and prepare for the future
- provides a shared view of our region's future that will enable partners to undertake detailed planning at a local level
- helps us to align our decision-making and implementation, guides us on where to direct investment, and supports integrated development and infrastructure planning in the region
- draws on the comprehensive planning work undertaken by partners, including as part of District Plans and growth

strategies, and detailed engagement with WRLC iwi partners

- can influence regional policy development and Regional and District Plan changes in the future, as well as Land Transport Plans, infrastructure strategies and other plans in the region.

### HOW MUCH GROWTH TO EXPECT?

It can be difficult to predict the exact population growth in our region over the next 30 years. In 2020 Sense Partners forecast a population increase for the region of around 250,000 by 2051; however, it is now not certain that growth will reach pre-COVID-19 projected expectations. The latest (2023) Sense Partners projections suggest growth of around 184,000 by 2052. Stats NZ projections suggest a more modest population increase, with the median projection at about 79,000 between 2018 and 2048. The extent of the divergence between projections highlights the uncertainty of predicting the future, and how much growth relies on international migration.

The Future Development Strategy is based on the higher rate of growth (i.e. Sense Partners' forecast), but it is acknowledged that for this to occur high net migration needs to be sustained. The Future Development Strategy includes a prioritisation and sequencing of new growth areas, and investments to address this uncertainty.

<sup>1</sup> See Section 3.13 of the National Policy Statement Urban Development.

## What we need to plan for

During the next 30 years the Wairarapa-Wellington-Horowhenua region needs to plan for:



200,000 more people



99,000 more homes



A greater supply of business and industrial land



new community services and amenities, in accessible locations



upgraded and new infrastructure to meet our current and growing needs



the region becoming more climate and natural hazard resilient.

To address this specifically for this region:



We have enabled capacity for over 206,000 houses, this is twice as much as we need over the next 30 years – a major shift since our previous spatial plan.



Our current population, whilst concentrated in some areas, is spread out across the region. Housing development expected over the next 30 years will continue this pattern.



Additional space for most business types can be accommodated across the region through intensification.



The need to provide for additional land for industrial activity. To do this we need to look at solutions across council boundaries in our region and are not only focused on local areas.



Infrastructure plans and budgets identify the supporting infrastructure we can currently afford to support development. Planning for infrastructure will need to be efficient as these budgeted amounts are less than what we need for almost all types of infrastructure.



Recent national level policy direction reduces our control over where and when all this housing development occurs, the strategy tries to address through prioritisation.



This Future Development Strategy identifies where and when we will collectively prioritise development:

- The prioritised development areas will provide 40% of the total housing development for the region. This prioritised focus makes it easier for us to agree where and when we provide infrastructure to support this growth with our limited funds.
- The other 60% of the total housing development for the region, reflects an uplift as a result of medium density residential standards. This is a significant percentage of our regions development and will require alternative ways to fund infrastructure, where shortfalls exist.









Over the next 30 years we expect 82% of our housing development to be in brownfield areas and 18% to be in greenfield areas.



We can provide for more housing and business development whilst ensuring that this region continues to become more natural hazard and climate change resilient and protect what we love.

## Our Spatial Strategy at a glance

The Spatial Strategy for this Future Development Strategy is briefly outlined below and explained in more detail in the full strategy document. The vision and strategic direction are set out in diagram 2 below.

VISION					
<p><b>Mō ā tātou uri. Ko tā te Rautaki Whakawhanake Anamata a Wairarapa-Te Whanganui a Tara-Horowhenua he whakatutuki i ngā hiahia o nāianeī me te aha ka kore ngā uri whakaheke e raru ki te whakatutuki i ō rātou ake hiahia. Ko te Tiriti o Waitangi te tūapapa o ngā rautaki hapori tirohanga whakamua hei huhua te rangatiratanga o tēnā o tēnā o ngā iwi.</b></p>					
<p>Let's be responsible ancestors. The Wairarapa-Wellington-Horowhenua Future Development Strategy will provide for growth that is sustainable by meeting the needs of the present without compromising the ability of future generations to meet their own needs. The future for our region is founded on Te Tiriti o Waitangi and realised through the tino rangatiratanga of tangata whenua</p>					
STRATEGIC DIRECTION					
 <p>Providing for affordable housing that meets our needs, and for compact well-designed towns and cities</p>	 <p>Realising iwi and hapū values and aspirations</p>	 <p>Promoting a flourishing zero-carbon region</p>	 <p>Protecting what we love</p>	 <p>Ensuring we have the infrastructure we need to thrive</p>	 <p>Providing opportunity for productive, and sustainable local employment</p>
WHAT DOES THIS RESULT IN?					
<p>Housing in the region is affordable, and different types of houses are built to meet the diverse needs of our communities, particularly good quality high and medium density housing across the region.</p> <p>The majority of housing development occurring within the boundaries of our current towns and cities.</p> <p>Our towns and cities are well designed and support community health and wellbeing.</p>	<p>Te Tirohanga Whakamua (statement of iwi and hapū values and aspirations) is actively implemented and influences decisions and investment in urban growth in our towns and cities.</p> <p>Engagement with mana whenua and other Māori in the region is ongoing and effective.</p>	<p>We live in a flourishing zero-carbon region that meets current and future generations' needs and aspirations, that supports opportunities for continually reducing emissions.</p>	<p>Our communities are safer from significant natural hazards and are becoming more climate resilient, and regional growth also avoids creating new risks.</p> <p>Urban development is designed to minimise impacts on the natural environment, our food producing areas and our rich cultural heritage.</p>	<p>The efficient use of current and planned infrastructure is maximised to get the best from our infrastructure investments. This includes fully unlocking the development potential of our current and future strategic public transport corridors.</p> <p>Infrastructure planning and development planning are undertaken together, to improve efficiencies and leverage co-investment opportunities with the public and private sector.</p> <p>We look to speed up infrastructure required to enable us to meet our strategic direction, faster.</p>	<p>Housing growth and local employment in our towns and cities are well connected and supports the Regional Economic Development Plan vision for employment in the region.</p> <p>New business areas with supporting infrastructure are provided for.</p> <p>The shortfall in industrial land in the region is resolved.</p>

## WE WILL GIVE EFFECT TO THE STRATEGIC DIRECTION THROUGH...



Prioritising most development within existing towns and cities and supporting medium density infill, broadening the choice of housing types close to existing amenities.

Continued collective implementation of Priority Development Areas. Supporting mixed used development so that people can live closer to where they work.

Placemaking principles outlined in the Future Development Strategy for development that is well designed.

Regulatory changes, such as alignment of District and Regional Plans.

Financial interventions such as incentives/disincentives and alignment of infrastructure investment



Te Tirohanga Whakamua is supported by the Future Development Strategy, including a future founded on Te Tiriti and realised through the tino rangatiratanga.

Avoiding development on certain sites of cultural and environmental significance. Developments observing statutory acknowledgements

and be carefully managed in areas with historical and cultural heritage.

Prioritising developments in “Areas of importance to iwi for development”.

Developing an Iwi Spatial Plan for integration into the next Future Development Strategy.



Prioritising development in areas along strategic public transport network corridors with active mode connections and good access to employment and other services.

The majority of growth will be located close to the public transport network.

Only prioritising those greenfield developments, that are well connected to existing centres and can

be easily serviced by infrastructure including public transport.

Fully unlocking the development potential of our strategic public transport system and making the best use of our existing infrastructure assets.

Supporting increased electricity generation over the life of the strategy to improve resilience.

Finalising the Regional Emissions Reduction Plan.



Avoiding development in Wāhi Toitū: areas that are subject to:

- known and understood earthquake fault risks,
- significant risks from sea level rise,
- highly productive land protections,
- natural environmental protections such as parks, indigenous biodiversity areas and freshwater ecosystems

Carefully managing development in Wāhi Toiora areas subject to (or that would impact):

- other natural hazard risks and the effects of climate change,

- historical and cultural heritage protections.

- Ecological protections

- Water limit and stream health protections

- Special amenity landscape protections

- Environmental buffer protections,

- Coastal marine areas and riparian margin protections,

- Land contamination,

- Erosion prone soils.

Encouraging hydraulic neutrality and nature-based solutions.

Continued development of a Regional Adaptation Plan and Regional Food Systems Strategy.



Focusing on maintaining and upgrading our existing network infrastructure (including transport, energy, water and social) and making the most efficient use of what we have.

Maximising co-investment and planning opportunities such as planning for schools and urban development together.

Avoiding development in drinking water protection areas and in locations of significant infrastructure.

Fully unlocking the development potential of our strategic public transport network and the significant

transport investments that are already planned and underway, such as LGWM, RiverLink and rail and road network improvements.

Investigating further improvements to the Metlink bus network and further infrastructure that is required for new development areas greenfields.

Signalling our support for the maintenance, upgrade and extensions that are required to infrastructure networks that are privately owned and operated.

Advocating to speed up infrastructure investments required, particular public transport.



Planning for the majority of development to be within existing towns and cities which are close to employment centres or have access to key employment centres via public transport.

Increased intensity of business uses within existing commercial areas.

Undertaking a regional industrial land study to consider

options for the shortage of industrial land expected in the next 30 years.

New business areas with supporting infrastructure are provided for.

Continued implementation of the Regional Economic Development Plan.



IWI VALUES AND ASPIRATIONS FOR URBAN DEVELOPMENT

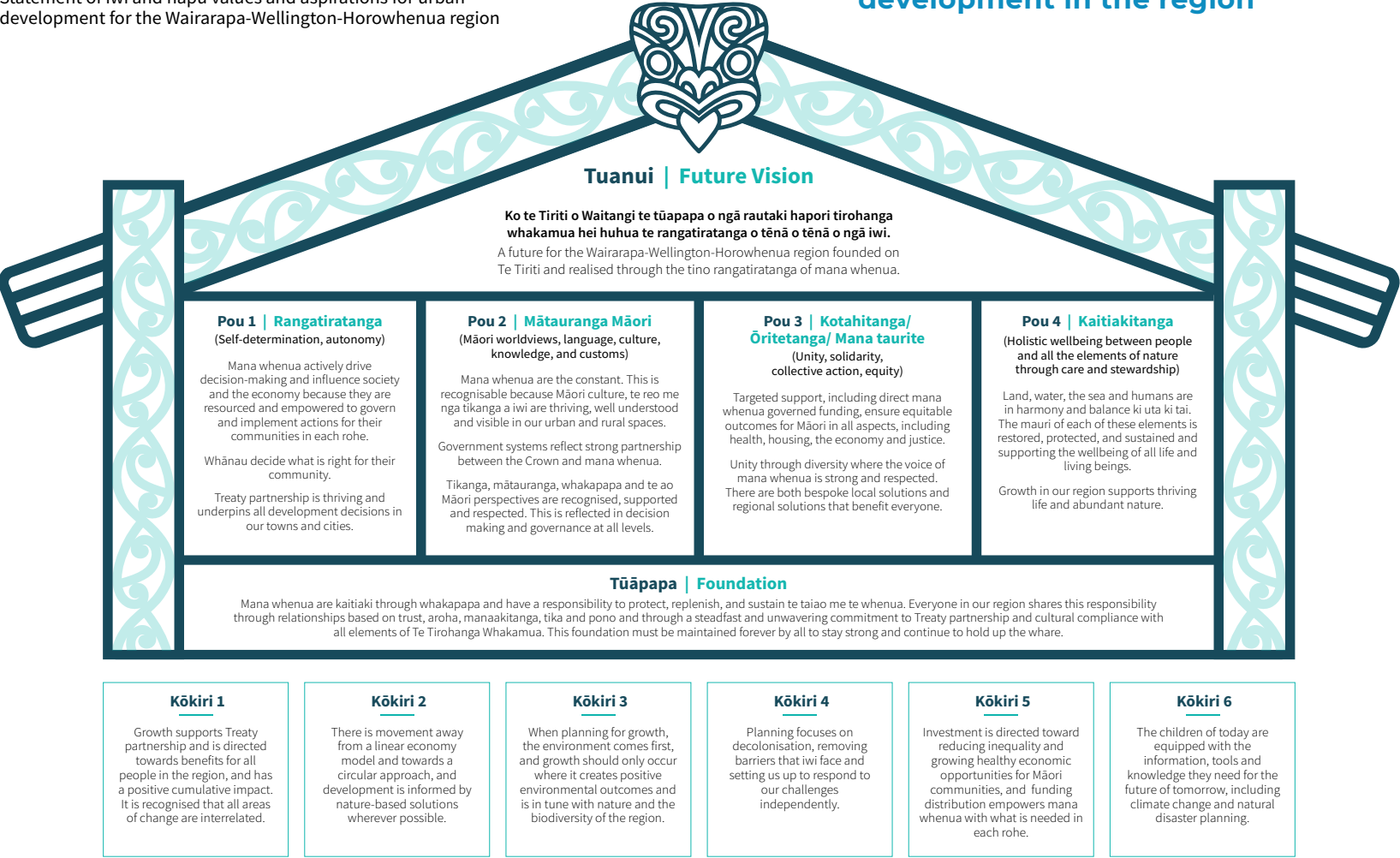
The WRLC iwi partners’ statement of iwi and hapū values and aspirations for urban development has been developed and given a name – Te Tirohanga Whakamua. Its main purpose is to inform

the Future Development Strategy as required by the National Policy Statement on Urban Development. The statement will also inform future work by the WRLC.

Te Tirohanga Whakamua

Statement of iwi and hapū values and aspirations for urban development for the Wairarapa-Wellington-Horowhenua region

Diagram 3: Te Tirohanga Whakamua: A statement of iwi and hapū values and aspirations for urban development in the region



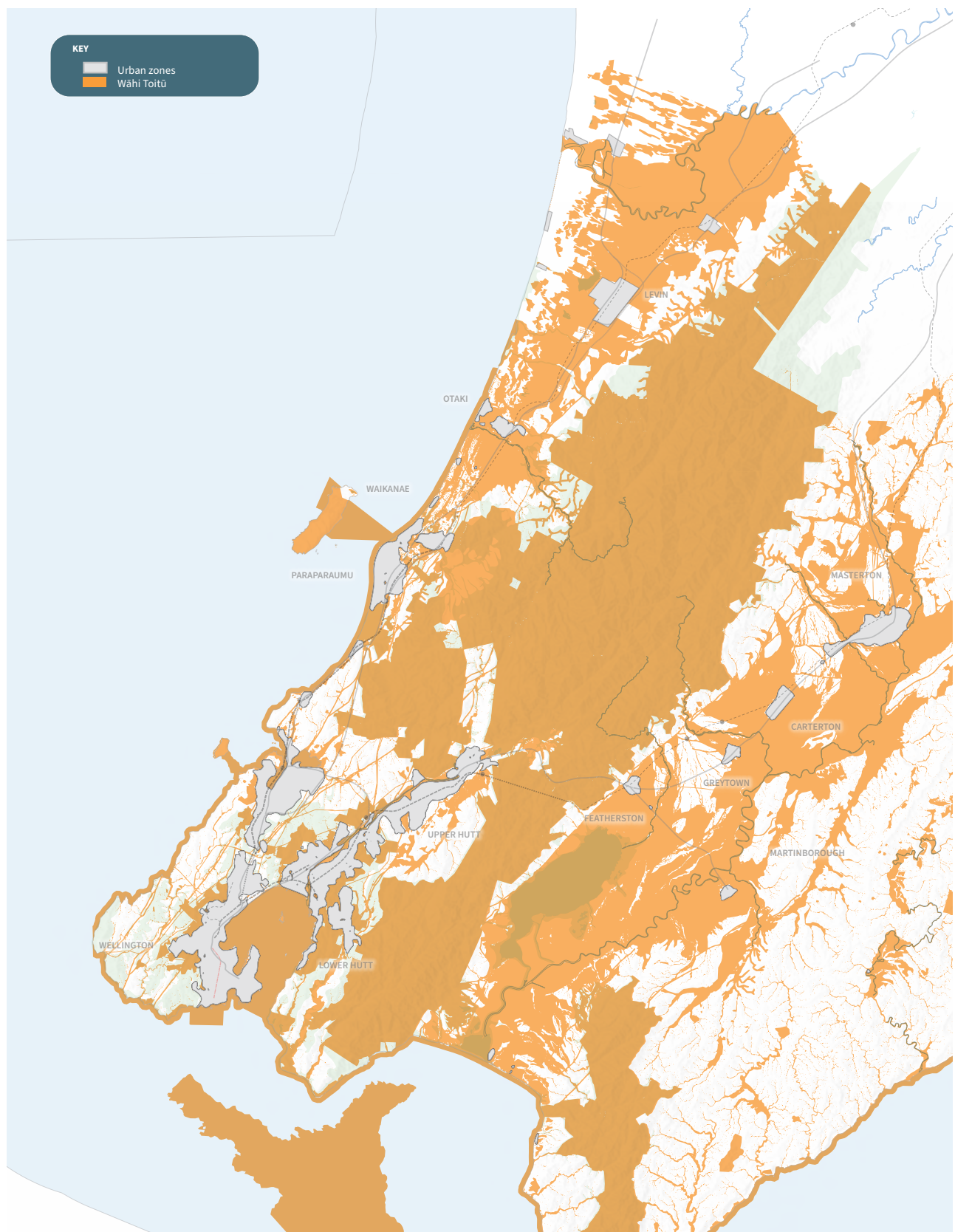
## Where will we avoid development and what other parts of the region is development potentially constrained?

Our region experiences various constraints on development and contains areas with precious values that we want to protect. These areas include extensive environmental- and water-supply-protection areas along the central mountainous spine between Wairarapa and the rest of the region, and the various natural hazard risks to which the region is subject. More detailed information on all constraints can be found in the Constraints Report, a supporting document for the Future Development Strategy.

Future development in the region needs to avoid significant hazards and areas with significant constraints or with values that we want to protect. We have identified Wāhi Toitū, shown in Diagram 4, which are the areas in the region with an enduring presence that need to be protected from new development.



**Diagram 4: Wāhi Toitū – areas protected from new development.**





## How we prioritise development

We will prioritise well designed, well-functioning urban environments in the region's towns and cities in this order:

- a. Areas of importance to iwi for development.
- b. Areas along strategic public transport network corridors with good access to employment, education and 'active mode connections' such as walking, cycling, scootering and skateboarding.
- c. Within 'Priority Development Areas'
- d. Within existing rural towns around current and proposed public transport nodes and strategic active mode connections.
- e. Greenfield developments that are well connected to existing urban areas in our towns and cities and can be easily serviced by existing and currently planned infrastructure, including by public and active transport modes, and where the location and design would maximise climate and natural hazard resilience.

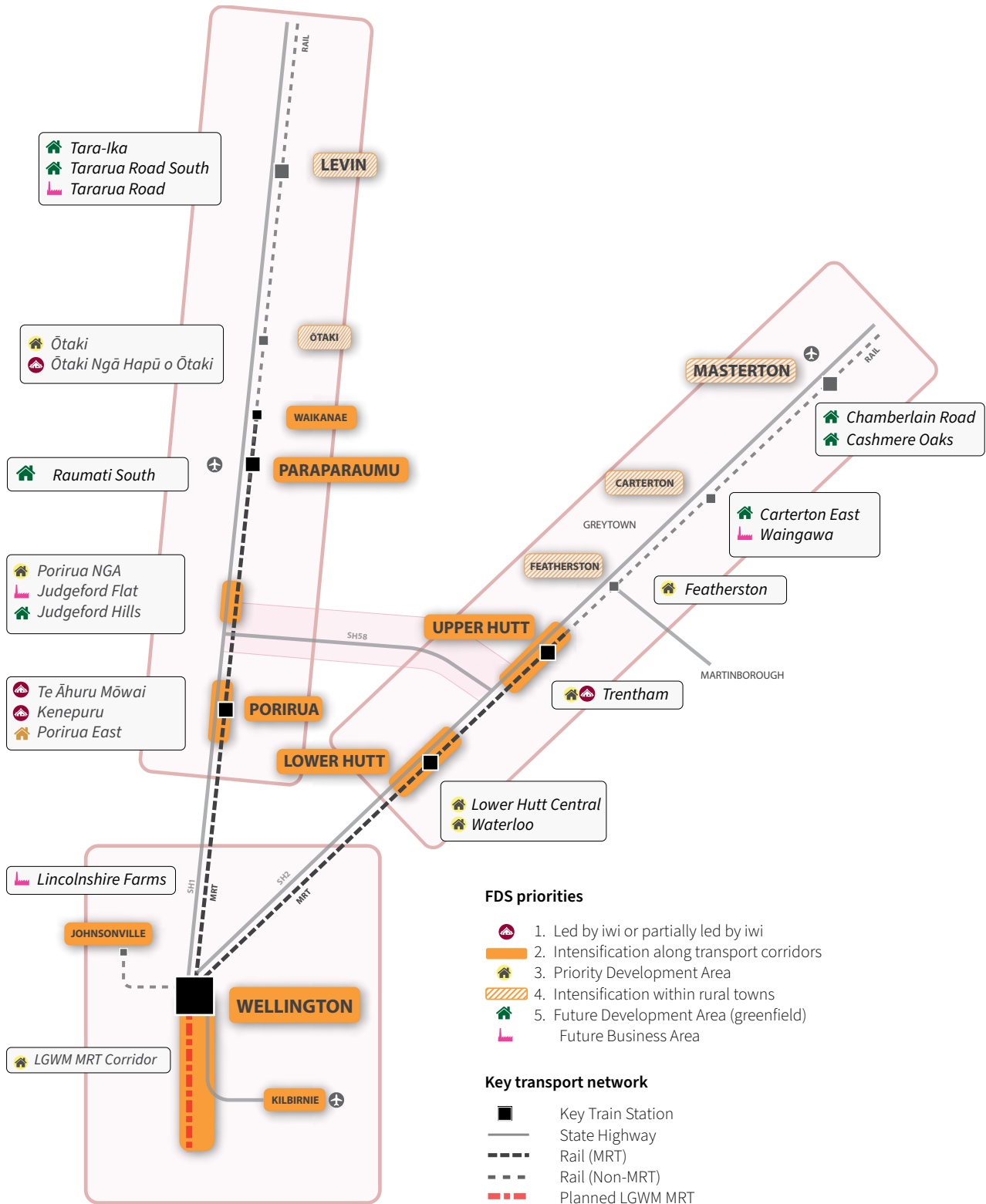
The Future Development Strategy does not support development that does not meet these priorities.

The development areas are shown on Diagrams 5-8 below.

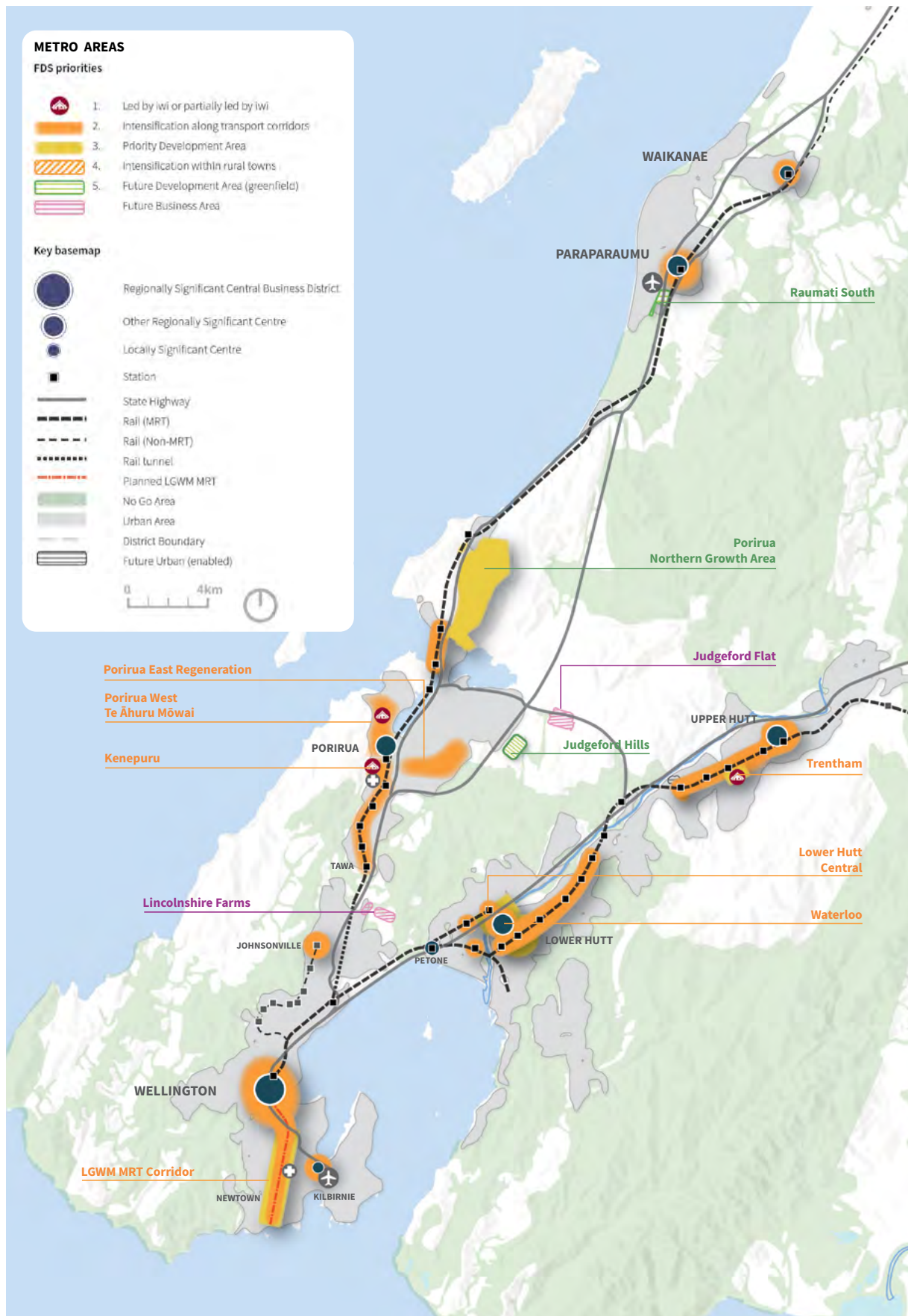




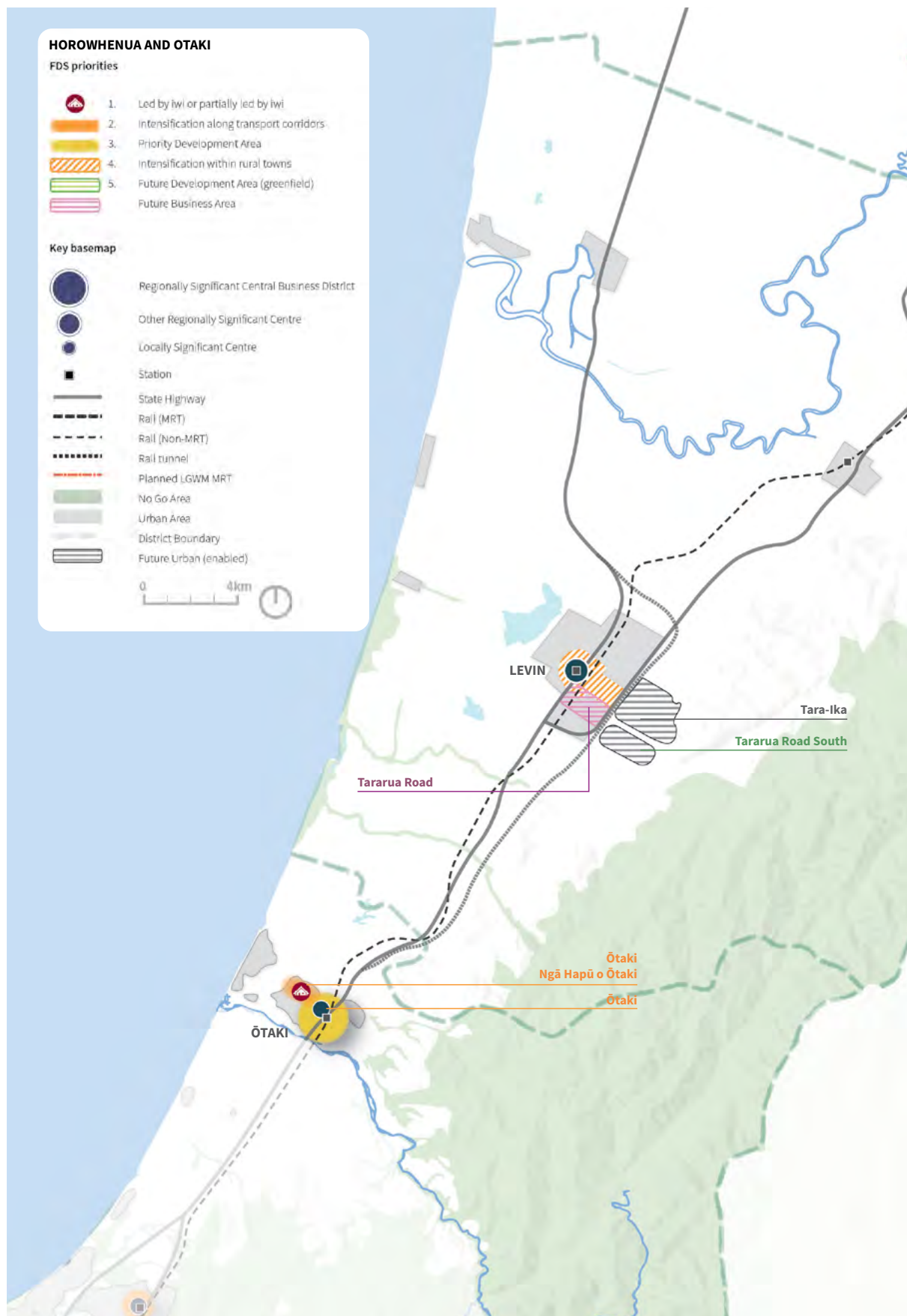
**Diagram 5: A corridor view of where we will develop by the end of the 30 year period.**



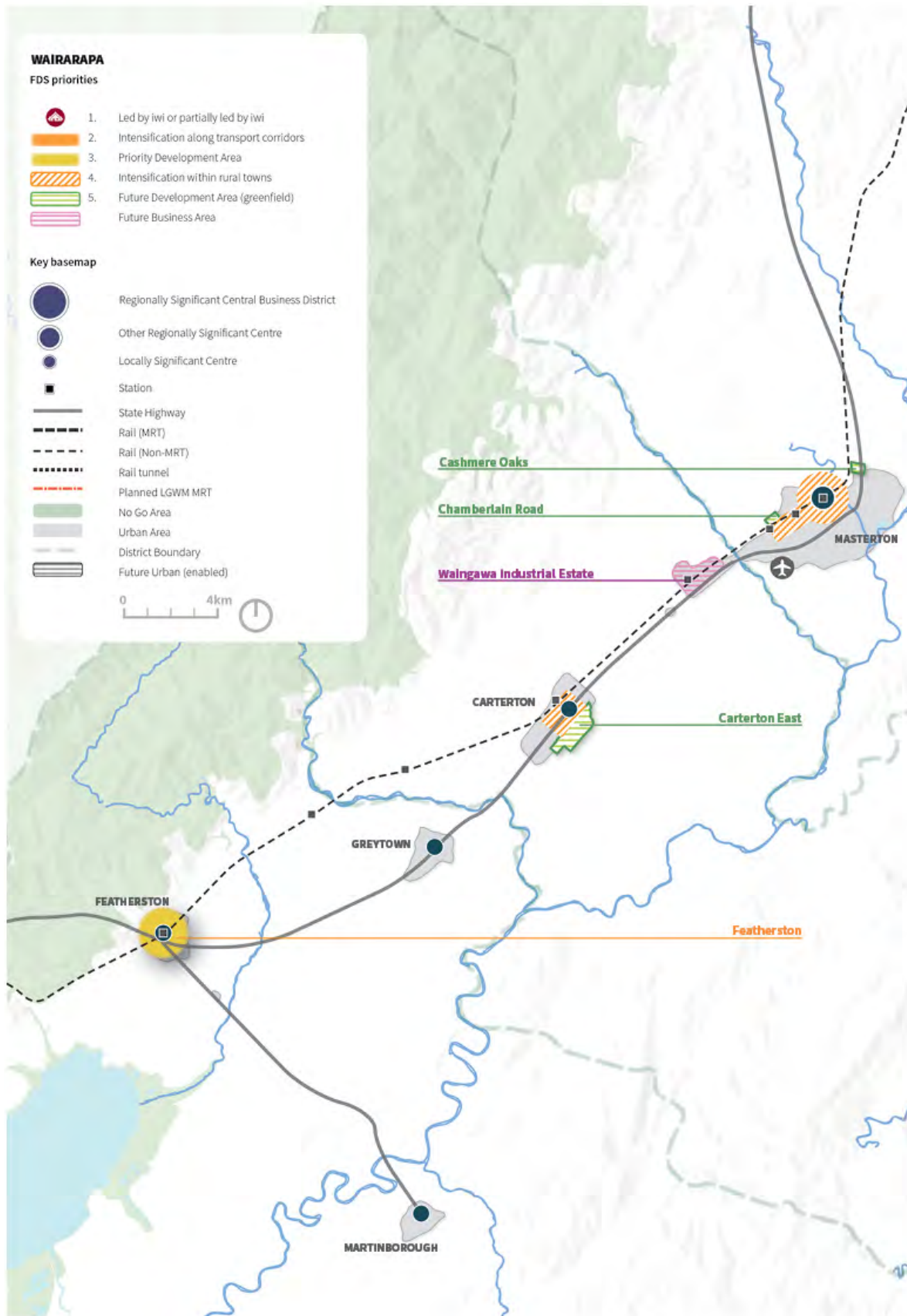
**Diagram 6: Prioritised development in the metro areas**



**Diagram 7: Prioritised development in Ōtaki and Horowhenua**



**Diagram 8: Prioritised development in the Wairarapa**





## How does it all come together?

The vision, strategic direction, how we prioritise areas for development, and the statement of iwi and hapū values and aspirations for urban development in our region provide the ultimate growth picture for the next 30 years in this region.

However, we also need to account for what is happening with regard to the locations and types of housing being built at present and the current housing demand, and what is enabled (or allowed) by District Plans in the region. For example, we currently have enough greenfield land identified or allowed for, for up to 65,000 homes, or two-thirds of our required growth. So we know that developing all this greenfield land would not meet our strategic direction as set out above.

If we take account of the ultimate growth picture and what is happening now and what is expected to continue, particularly in the first 10 years of the Future Development Strategy, we have a Future Development

Strategy where:

- in years 1-10 - we would expect to see 21% of housing development in greenfield land and 79% of housing development in brownfield land
- in years 10-30 - we would expect to see 16% of housing development in greenfield land and 84% of housing development in brownfield land
- in the 30 years of the Future Development Strategy - we would expect to see 18% of housing development in greenfield land and 82% of brownfield land.

The main reasons for the higher percentage of greenfield in the first ten years relates to:

- some large greenfields are District Plan enabled and either work has started or planning is well underway
- the development of large brownfield areas in the region have a long planning phase, or planning to accommodate a large housing development has yet to begin.



## Infrastructure to support growth.

Over the next 30 years, infrastructure will need to keep pace with our growing population. Existing infrastructure will need to be maintained and strengthened in areas expecting high-density in-fill housing, and new infrastructure will be needed for new development areas.

These activities carry with them significant costs to ratepayers and others such as Waka Kotahi and private sector energy suppliers. As well as costs, key factors such as emission reductions, accessibility issues and the need for climate and natural hazard resilience must be considered.

These are complex regional issues that are best dealt with by all regions together, not individually. Many cross local council and iwi boundaries (e.g. investments in water and transport) and the maximum benefits when planning and investing can be gained through regional approaches with local and central government and mana whenua.

In turn, different types of infrastructure can work together to provide equitable and sustainable futures for the people and environment of our region.

Councils are responsible for providing community services such as: regional transport (including public transport and the maintenance and upkeep of local road networks); three-water services; waste-management services; public parks and other community facilities; support for the arts and culture; and urban regeneration.

<sup>2</sup> The projects listed are based on currently published information (for example, the 2021 LTP and RLTP) and are not exhaustive. There are also interdependencies that may change as further investigations are completed. Local and regional councils are in the process of developing their updated RLTPs and LTPs for 2024

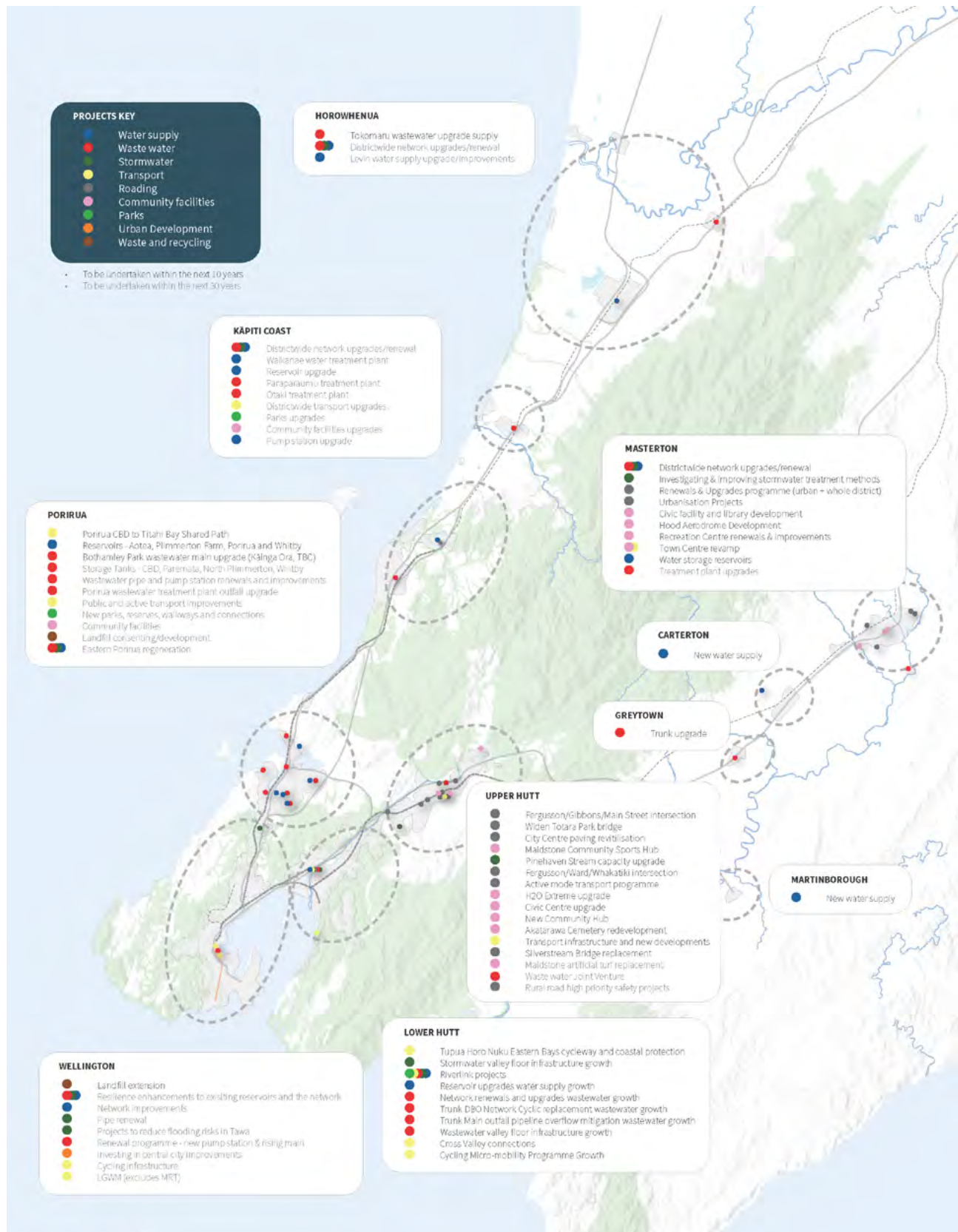
Ports (both sea and air), state highways, telecommunications companies, electricity, gas and petroleum suppliers, and health and education providers all contribute infrastructure for our region.

The following are important aspect to remember when making infrastructure decisions to support prioritised housing and business development areas:

- We must maximise the use of our current and planned infrastructure and investments across a range of infrastructure types, including transport, energy, water and social.
- We must fully unlock the development potential of our strategic public transport system, including current and future rapid-transit-oriented corridors to enable mode shift and reduce regional transport emissions.
- We need to look for ways to maximise the leverage of co-investment opportunities.
- Speeding up required infrastructure will be of benefit.
- We cannot afford all the infrastructure required.

Key maps are below (Diagrams 9-11) they show the general locations of the corridors and sites of major infrastructure identified in council LTPs in the first decade of the Future Development Strategy. The projects identified have been either committed to and funded or signalled. The timing of these key projects helps to inform a broad understanding of when and where growth at scale is likely to occur. There is particular uncertainty around the timing and delivery of medium- and long-term projects due to the constrained financial environment and current planning underway<sup>2</sup>.

**Diagram 9: General location of the corridors and sites of major infrastructure identified in council Long Term Plans (LTPs) over the first decade of the Future Development Strategy**





**Diagram 10: The Wellington regional strategic transport network**

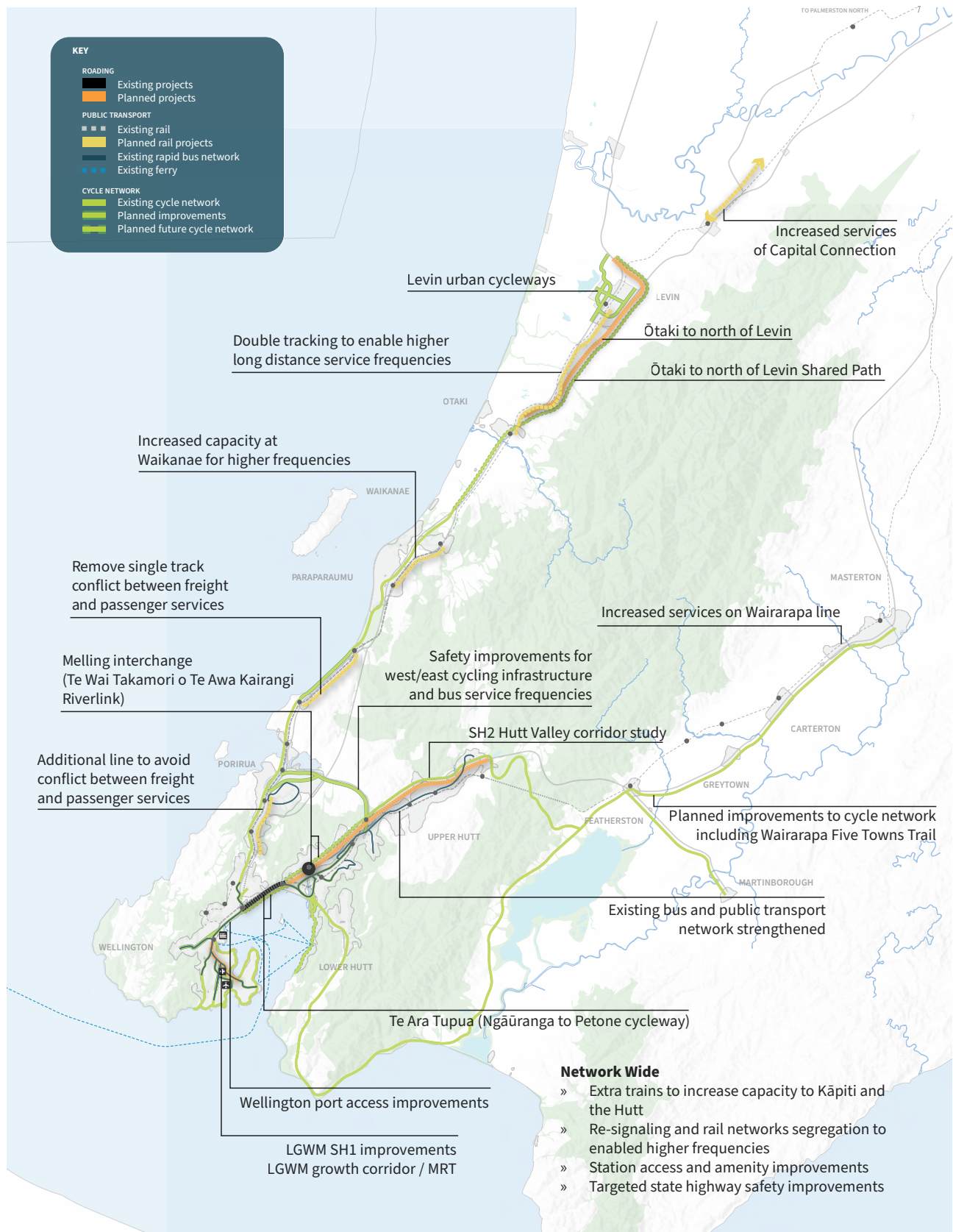
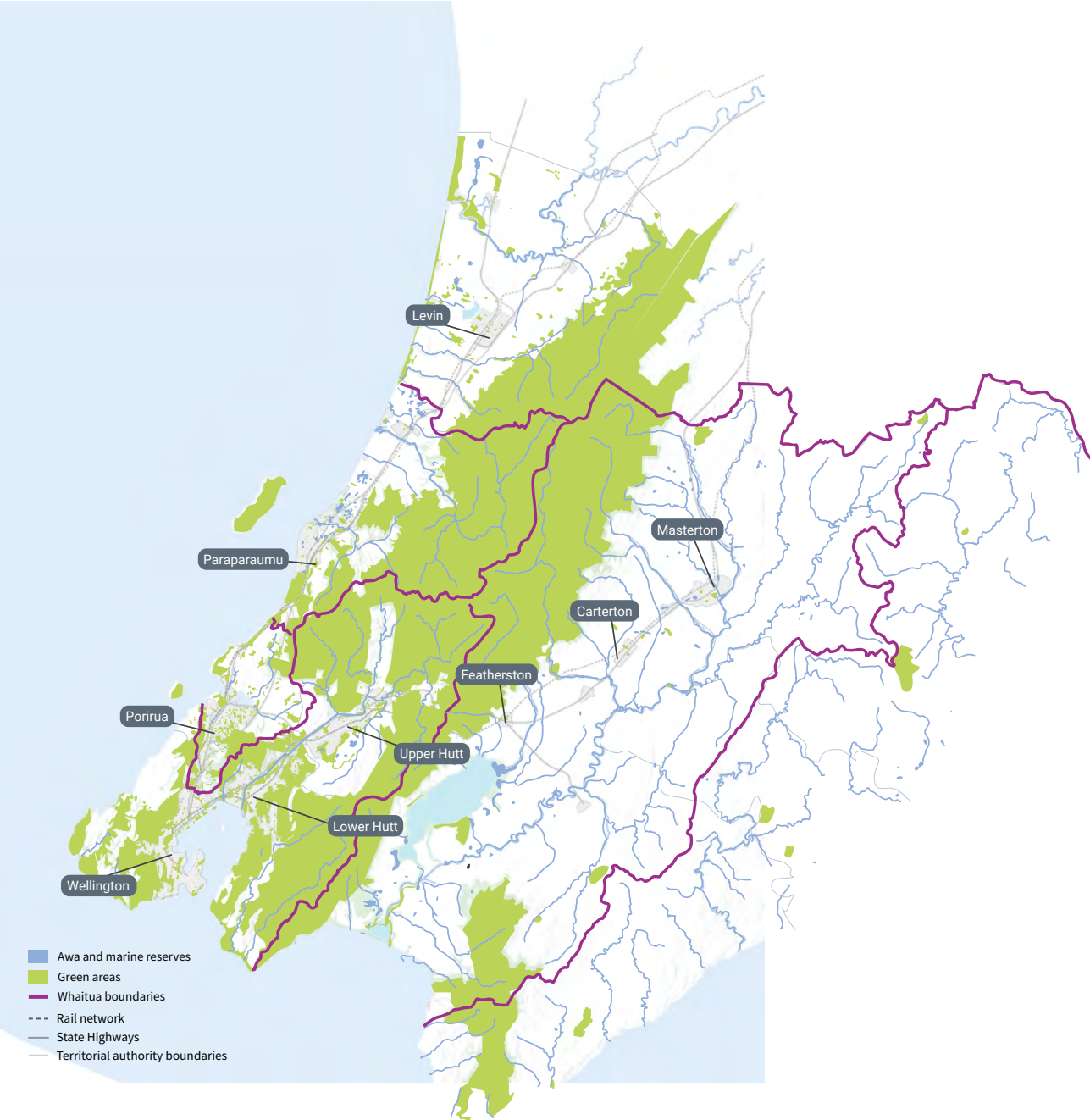




Diagram 11: Blue-green networks in the region



## Planning and policy context

The Future Development Strategy builds on and replaces the Wellington Regional Growth Framework 2021 (WRGF). The WRGF was a spatial plan that provided an agreed long-term vision for regional growth and investment in the region, and contained many (but not all) elements of what would be this Future Development Strategy.

Since the WRGF was published, our planning and policy context has changed. For example:

- our region's development capacity has increased substantially as a result of District Plan changes, including revisions to the Wairarapa Combined District Plan (a new combined District Plan is expected later in 2023)
- a significant proposed plan change to the Wellington Regional Policy Statement has been notified to address freshwater, biodiversity, climate change and urban development issues
- there are new national directions (through National Policy Statements) for freshwater, highly productive land and indigenous biodiversity, as well as plans for emission reductions and climate adaptation.

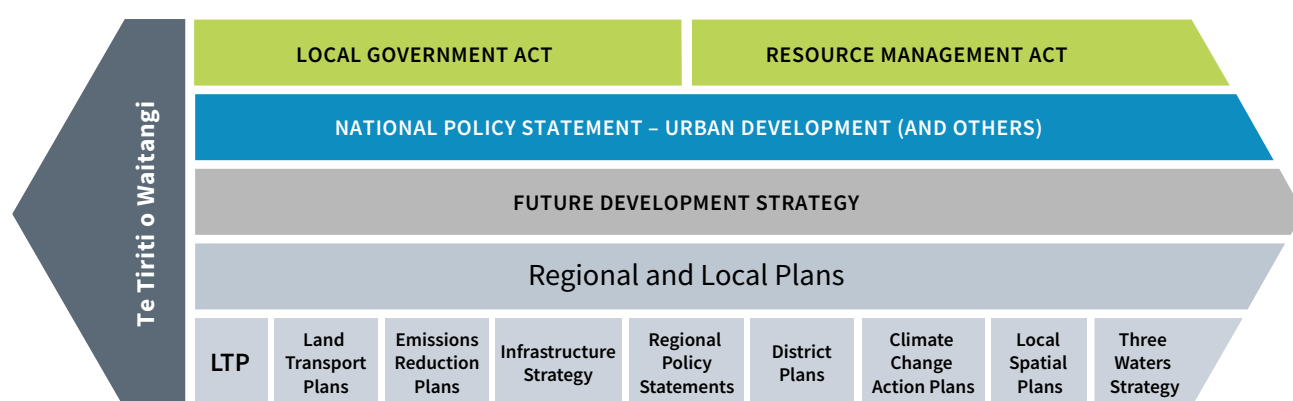
These changes are significant and have informed the development of this Future Development Strategy.

## Legislative requirements

The National Policy Statement on Urban Development 2020 (NPS-UD) includes a statutory requirement for tier 1 councils to prepare future development strategies in time to inform their next Long Term Plans (LTP). The tier 1 councils in our region are Wellington City, Hutt City, Upper Hutt City, Porirua City, Kāpiti Coast District and Greater Wellington Regional. Our Future Development Strategy also includes the following tier-3 councils in our region, even though they are not required by the NPS-UD to have a Future Development Strategy: – Horowhenua, Masterton, Carterton and South Wairarapa. This allows us to plan effectively together for the future.

The Future Development Strategy will also inform the strategic and planning decision-making processes of all the councils in our region, including in relation to their infrastructure strategies, Land Transport Plans, Regional and District Plans, and local plans, as shown in Diagram 12.

**Diagram 12: How the Future Development Strategy fits with other council plans and national legislation**



## Our Implementation plan and review process

We will publish an Implementation Plan which will set out the actions that are required to achieve the Future Development Strategy. This will include key projects and measures to monitor our progress and measure our success. Reviews of the Implementation Plan will take place annually, as will reporting.



# Submission Form

## How you can have your say

- Our preference is for you to submit online by visiting: **wrlc.org.nz/future-development-strategy**
- If you want to fill in a paper form, please scan this form and email: **future.developmentstrategy@wrlc.org.nz** (ensuring “submission on FDS” is in the subject line.
- If post is the best option for you, please address to:  
**Wellington Regional Leadership Committee Secretariat  
c/o Future Development Strategy Lead  
PO Box 11646  
Wellington 6011**

### **Feedback must be received by no later than 5pm Thursday 9th November 2023**

If you make a submission, you can also speak to the WRLC Hearings Subcommittee in support of your submission. You can indicate you would like to take part in the hearings process by ticking the appropriate box in the submission form. Hearings on the draft Future Development Strategy are scheduled to be held in the week beginning 11th December 2023.

## Key dates

### **Submission Period**

Monday 9th October –  
Thursday 9th November 2023

### **Webinar to find out more (FDS 101)**

Tuesday 17th October 2023

### **Webinar for experts to know more**

Thursday 19th October 2023

### **Hearings and Deliberations**

Week beginning 11th December 2023

### **Final Future Development endorsed**

March 2024



## Your details<sup>3</sup>

### Contact details

**First Name:** \_\_\_\_\_

**Last Name:** \_\_\_\_\_

**Email address:** \_\_\_\_\_

**Postal address:** \_\_\_\_\_

**Phone:** \_\_\_\_\_

Is your feedback on behalf of an organisation or business\*? (if yes, this confirms you have the authority to submit on the organisations behalf) ☐ **Yes** ☐ **No?**

**Organisation Name** \_\_\_\_\_

\* Please include your full name, postal address, and email address. If your feedback is on behalf of a group or organisation, you must include your organisation's name and your role in the organisation.

## Hearings

Do you wish to attend a hearing to present your submission during the hearings process during business hours beginning 11 December 2023? ☐ **Yes** ☐ **No**

If yes please indicate the most convenient location for you to be heard in order of preference<sup>4</sup>

- ☐ **Monday 11th December – Wellington CBD –**  
Greater Wellington Regional Council, 100 Cuba Street
- ☐ **Tuesday 12th December – Masterton –**  
Greater Wellington Regional Council, 34 Chapel Street
- ☐ **Wednesday 13th December – Paraparaumu –**  
Kapiti Coast District Council, 175 Rimu Road
- ☐ Online (we will send you a link)

If yes please ensure we have your email address and phone number.

<sup>3</sup> Please note: We require your contact details. Your feedback, name and address are provided to decision makers. Your feedback, with your name only, will be available on our website. However, if requested, we may make feedback, including contact details, publicly available. If you feel there are reasons why your contact details and/or feedback should be kept confidential, please email: [future.developmentstrategy@wrlc.org.nz](mailto:future.developmentstrategy@wrlc.org.nz). A copy of the full privacy statement can be found online.

<sup>4</sup> We will endeavour to accommodate your first preference. Dates and times will be confirmed once submissions close. Additional dates may be added depending on availability and need.



**These questions are optional but will help us understand which groups of the community are engaging with us.**

What gender are you?

- ☐ Male ☐ Female ☐ Prefer not to say

What age group do you belong to?

- ☐ 15–17 ☐ 18–24 ☐ 25–34 ☐ 35–44  
☐ 45–54 ☐ 55–64 ☐ 65–74 ☐ 75+

Which ethnic group(s) do you feel you belong to? (Please select as many as apply)

- ☐ Pākehā/NZ European ☐ Other European ☐ Māori  
☐ Cook Island Māori ☐ Samoan ☐ Tongan  
☐ Indian ☐ Chinese ☐ Southeast Asian  
☐ Other (please specify):

**Where in our region do you live?**

- ☐ Kāpiti Coast  
☐ Te Awa Kairangi ki Tai / Lower Hutt  
☐ Porirua  
☐ Te Awa Kairangi ki Uta / Upper Hutt  
☐ Masterton  
☐ Carterton  
☐ South Wairarapa  
☐ Pōneke / Wellington City  
☐ Horowhenua  
☐ I don't live in any of these areas.

**Would you like to subscribe to the WRLC newsletter?**

- ☐ Yes ☐ No

# Your Feedback

We want your views on how this “big picture” approach could be improved. We have six questions below and an opportunity to provide more detail. We strongly encourage you to read the proposed approach and accompanying information before answering the following questions below.

## QUESTION 1: VISION AND STRATEGIC DIRECTION OF THE FUTURE DEVELOPMENT STRATEGY

### What are we proposing?

The overarching direction that guides the Future Development Strategy is made up of the vision, strategic direction, the 5 priorities for how to prioritise areas for development and statement of iwi and hapū values and aspirations for the development in our region.

### Why are we proposing this?

We aspire to be responsible ancestors by ensuring the Wairarapa-Wellington-Horowhenua Future Development Strategy will provide for growth that is sustainable by meeting the needs of the present without compromising the ability of future generations to meet their own needs. We want our future to made up of well-functioning urban environments and a flourishing, zero-carbon region that is founded on Te Tiriti o Waitangi and realised through the tino rangatiratanga of tangata whenua.

	<b>Question 1: Do you support our vision and strategic direction that guides the draft Future Development Strategy?</b>		
	<input type="radio"/> Support	<input type="radio"/> Don't support	<input type="radio"/> Unsure
Tell us why...			
<hr/>			
<hr/>			
<hr/>			
<hr/>			
<hr/>			
<hr/>			
<hr/>			

**QUESTION 2: OUR PLAN FOR WHERE WE DEVELOP HOUSING OVER THE NEXT 30 YEARS AS OUR REGION GROWS.**

**What are we proposing?**

We’re providing for affordable housing that meets our diverse needs, and for compact, well-designed towns and cities. We’re proposing to concentrate most of our housing development in existing urban areas and rural towns with good current and future transport links that function well now or will be improved through future transport developments (known as “strategic transport networks”).

**Why are we proposing this?**

These proposals will help address our current and future housing needs as our population grows over time as well as for people in our region to live low carbon lifestyles and get around easily. Concentrating housing development in urban centres ensures we protect our natural areas and food production land from encroachment.



**Question 2:** Do you support our proposal to prioritise **housing development** in our existing towns and cities and around our strategic transport network ie around current and future transport hubs and routes?

- ☐ Support
- ☐ Don't support
- ☐ Unsure

Tell us why...

---

---

---

---

---

---

---

---

---

---

**QUESTION 3: OUR PLAN FOR WHERE WE DEVELOP BUSINESS LAND OVER THE NEXT 30 YEARS AS OUR REGION GROWS.**

**What are we proposing?**

We’re proposing to concentrate most of our business development in existing urban areas and rural towns with transport links that function well now or will be improved through future transport developments (known as ‘strategic transport networks’).

**Why are we proposing this?**

This proposal helps support productive, and sustainable local employment. A growing region means that there will be more people seeking employment here. While the Future Development Strategy cannot require growth in business and employment activity (i.e. more jobs or more businesses), it can support this by making sure that the regulatory settings and infrastructure that is required for businesses to flourish is in place at the right time.



**Question 3:** Do you support our proposal to prioritise **business development** in our existing towns and cities and around our strategic public transport network ie around current and future transport hubs and routes, to provide for sustainable, local employment?

☐ Support ☐ Don't support ☐ Unsure

Tell us why...

---

---

---

---

---

---

---

---

---

---



**QUESTION 4: OUR PLAN FOR KEY INFRASTRUCTURE TO SUPPORT DEVELOPMENT IN OUR REGION..**

**What are we proposing?**

Our proposed approach is to maximise use of current and planned infrastructure in the most efficient ways possible to get the best from our infrastructure investments. This includes providing the infrastructure we need such as stormwater, wastewater, drinking water, road, rail, cycleways, electricity and social infrastructure such as schools and hospitals in the most well-functioning and cost-efficient ways possible. It also includes fully unlocking the development potential of our current and future strategic public transport corridors.

**Why are we proposing this?**

We want to ensure that our infrastructure meets the needs of our diverse and growing population, supports housing, business and well-functioning urban environments, and is as cost-efficient as possible. We are proposing that infrastructure planning and development planning are undertaken together, to improve efficiencies and leverage co-investment opportunities with the public and private sector. We are looking for ways to speed up infrastructure required to enable us to meet our strategic direction, faster whilst being fiscally responsible.



**Question 4: Do you support our proposed approach to invest in infrastructure that is located in existing towns and cities and around current and future transport hubs and routes?**



Support



Don't support



Unsure

Tell us why...

---

---

---

---

---

---

---

---

**QUESTION 5: OUR PLAN FOR WHERE TO LIMIT OR AVOID DEVELOPMENT IN OUR REGION.**

**What are we proposing?**

We’re protecting what we love. Our region is subject to various constraints on development and contains areas with precious values we are proposing to protect by limiting or avoiding development in these areas. This includes extensive measures to protect our environment and water supply areas along the central mountainous spine between Wairarapa and the rest of the region, and the various natural hazard risks which the region is subject to and sites of cultural importance to Māori in our region.

**Why are we proposing this?**

Our proposed plan ensures communities are safer from significant natural hazards and are becoming more climate resilient, and regional growth also avoids creating new risks. It ensures urban development is designed to minimise impacts on the natural environment, our food producing areas and our rich cultural heritage.



**Question 4: Do you support our proposed approach to protect the areas we love by avoiding or limiting? urban development in areas that prone to natural hazards, land that is highly productive or land that contains high cultural or environmental/biodiversity values?**

☐ Support      ☐ Don't support      ☐ Unsure

Tell us why...

---

---

---

---

---

---

---

---

---

---

**QUESTION 6: REFLECTING IWI AND HAPŪ VALUES AND ASPIRATIONS**

**What are we proposing?**

Te Tirohanga Whakamua is a statement of iwi and hapū values and aspirations for urban development in our Region. It was created by WRLC iwi members and has informed the development of our draft strategy. Some values and aspirations expressed within it that go beyond the scope of the draft strategy and will likely be captured by other work programmes. Well-functioning urban environments need to enable Māori to express their cultural traditions and norms. We'd like to hear from both mana whenua and from other Māori in our region on how we can best support their diverse values and aspirations for urban development.

**Why are we proposing this?**

Supporting values and aspirations set out in Te Tirohanga Whakamua is vital to realising the Future Development Strategy's vision of a region founded on Te Tiriti o Waitangi and realised through the tino rangatiratanga of tangata whenua. A significant number of Māori living in our region do not have whakapapa links here. It's important that we also hear the views of these individuals and groups on our proposals for the future of our region through the Future Development Strategy.



**Question 6: How do you think we can best support the values and aspirations of Māori in our region through the implementation of the Future Development Strategy?**

Tell us why...

---

---

---

---

---

---

---

---

---

---

## QUESTION 7: WHAT ELSE IS IMPORTANT TO YOU?

Do you have any other feedback on the draft Future Development Strategy?

Tell us more...

---

---

---

---

---

---

---

---

---

---

Need more room? You can add more pages.

For any questions, please email **[future.developmentstrategy@wrlc.org.nz](mailto:future.developmentstrategy@wrlc.org.nz)**





[wrlc.org.nz](http://wrlc.org.nz)