

Regional Food System Plan (RFSP)

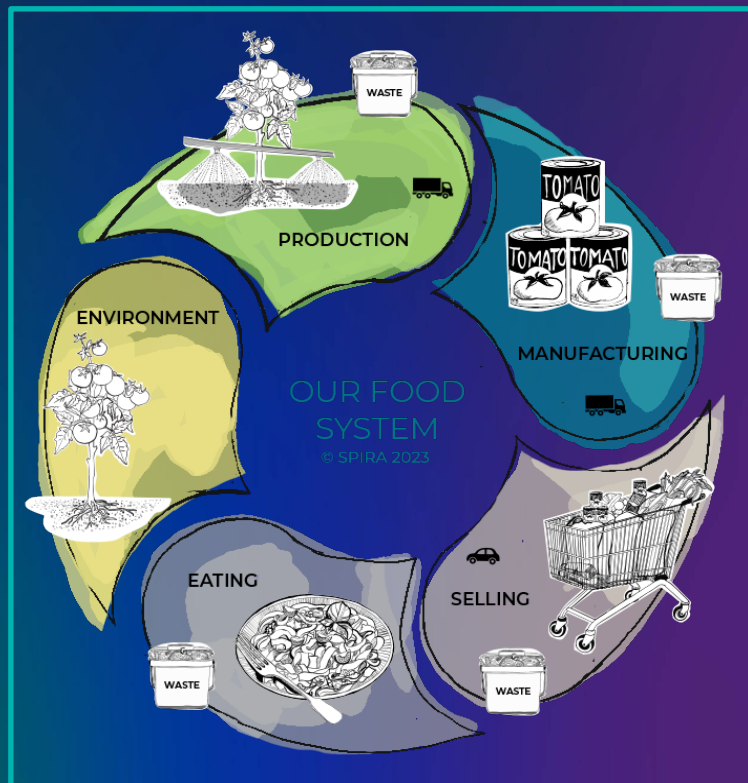
A food system for all

Tessa Ackerson

Senior Public Health Advisor

Health New Zealand | Te Whatu Ora – National Public Health Service

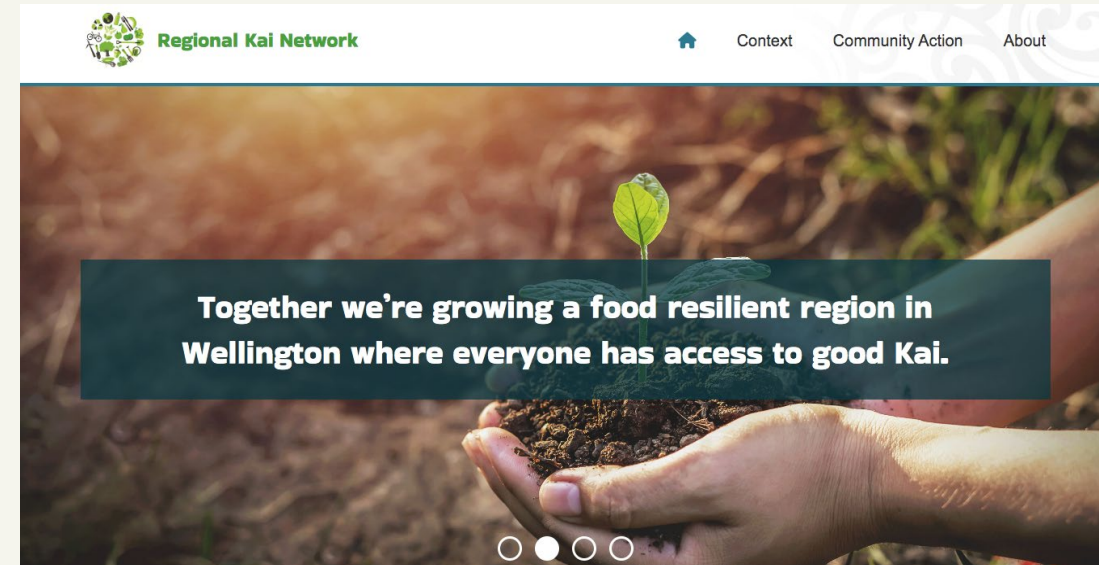
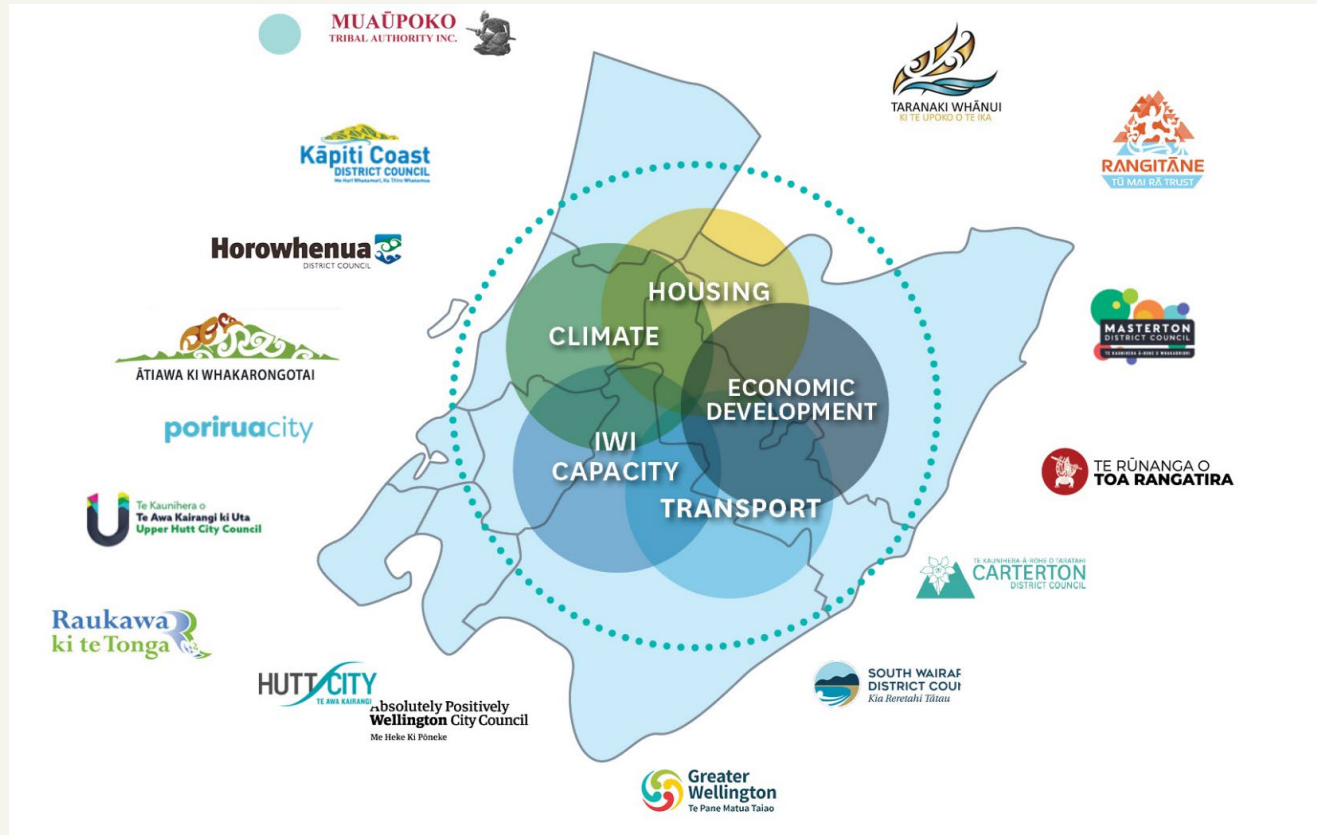
Agenda



- Why does this work matter?
- What have we been hearing?
- What is our approach?
- Where are we now?
- Where are we going?



Where did this work come from?



<https://regionalkainetwork.org.nz/>

Conversations with mana whenua

Iwi/hapū rōpū

It is unacceptable to have:

- Hunger and no access to nourishing, affordable food
- Climate change impacts and degradation on te taiao and kai
- A lack of food sovereignty and resilience in the region

What we need:

- Incentives and alternatives to growing and accessing good food
- Changing urban development
- Planning for reducing reliance on fossil fuels
- Education rooted in Mātauranga Māori
- Unified voice to drive change



What communities are saying

Community Advisory Board

"The current food system is bad for our environment. It's just not sustainable."

"People don't know where milk comes from. They think it comes from the supermarket."

"Food isn't nutrient dense because the soil is so decrepit."

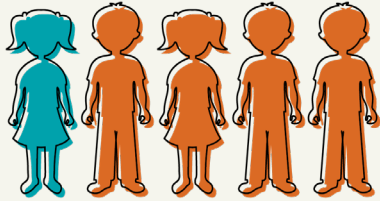
"We have commodified food. Rather than it being part of our lives everyday to connect us to environment and others, its become a commodity for people to make profit off of."

"The overall system doesn't acknowledge the community side of the system, and its not seen as a realistic option, eg people growing their own food."

"Farmers struggle with the pressure to move to industrial farming."

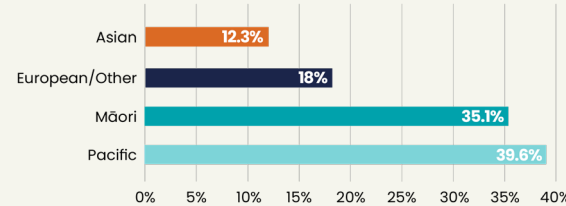
"We've got people clipping the ticket all the way down the food chain."

“We have a food system that is not for everyone”

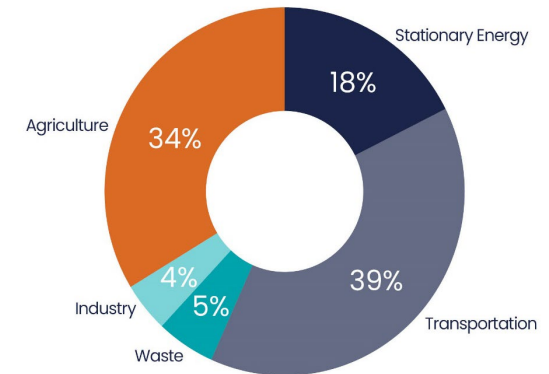


1 in 5 children (21.3%) lived in households where food ran out often or sometimes

More than **one in three Māori (35.1%) and Pacific (39.6%) children** were living in households where food ran out often or sometimes in the year prior to the 2022/23 survey, compared to nearly one in six European/Other (18.0%) and one in eight Asian (12.3%) children



Wellington Region Sources of GHG Emissions



“We throw away over **122,547 tonnes of food** a year – enough to feed around **262,917 people**, or half the population of the Wellington region for 12 months.”



The supermarket duopoly pulls in **over \$1 million a day in profits** from consumers, at a time when food prices are rising faster than inflation.

Vision and approach of the RFSP

Vision: *A regional food system that is sustainable, equitable, and locally-led, that centres the wellbeing of our environment and people.*

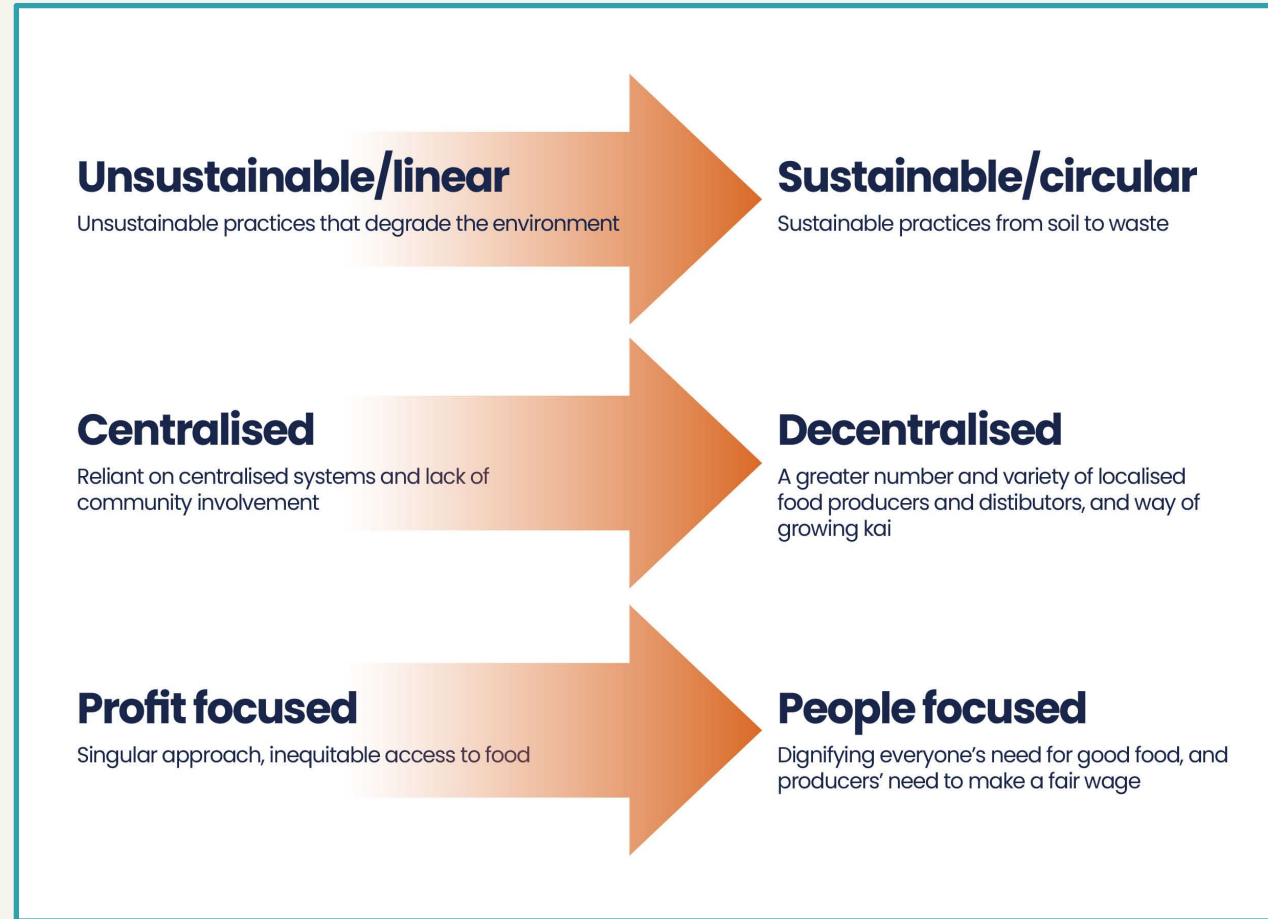


Iwi/hapū rōpū

Community Advisory Board

Technical Advisors

Key Shifts for our Future Food System



Where are we now?



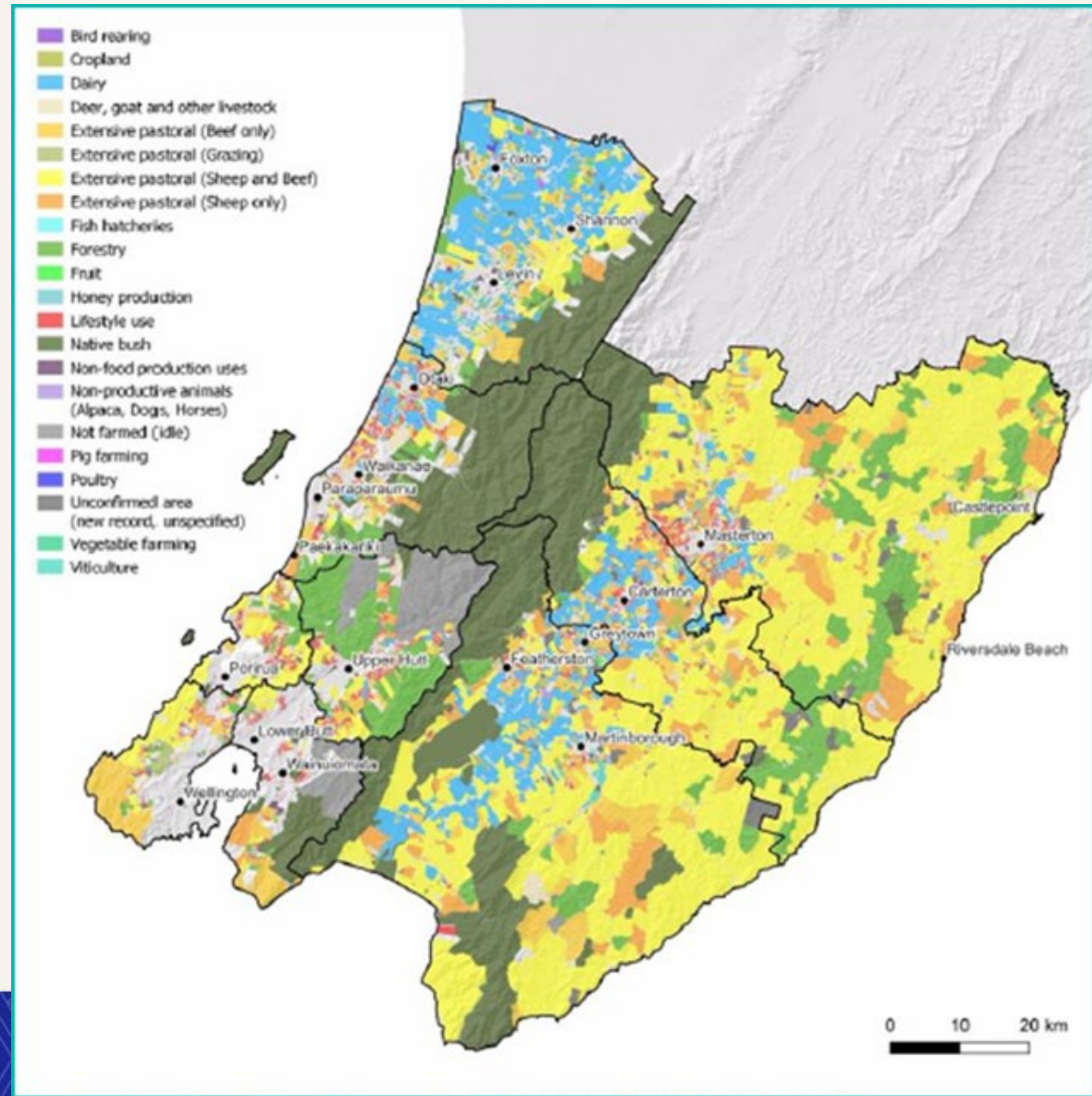
- Regional Land Use
- Regional Food Production and Demand
- Opportunities for a Local Food Economy

Regional Land use

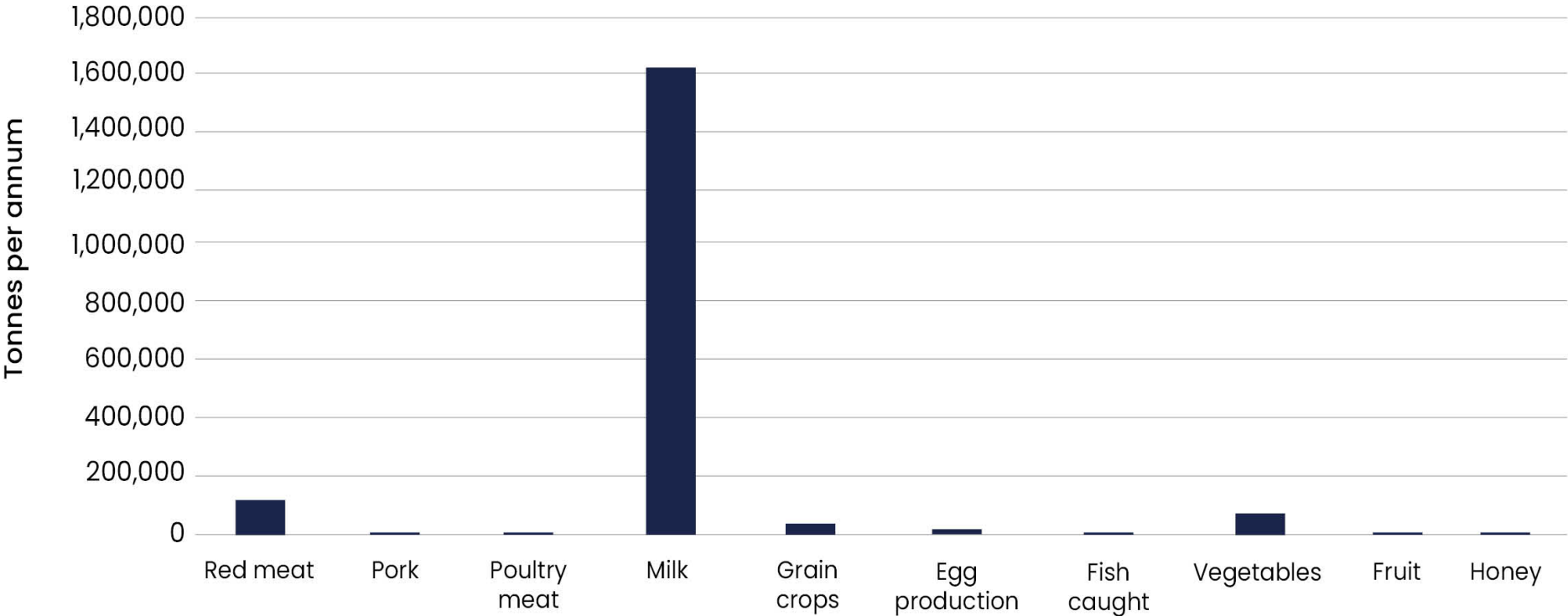
Key point: Need to consider how we use land to produce population food needs and protect the environment

Sheep & beef	Dairy culls	Deer & Goats	Pork	Poultry meat	Eggs
232	133	47	11,441	12,425	31,014
Milk	Vegetables	Fruit	Crops	Fish	Honey
23,868	41,500	20,801	5,500	4	182

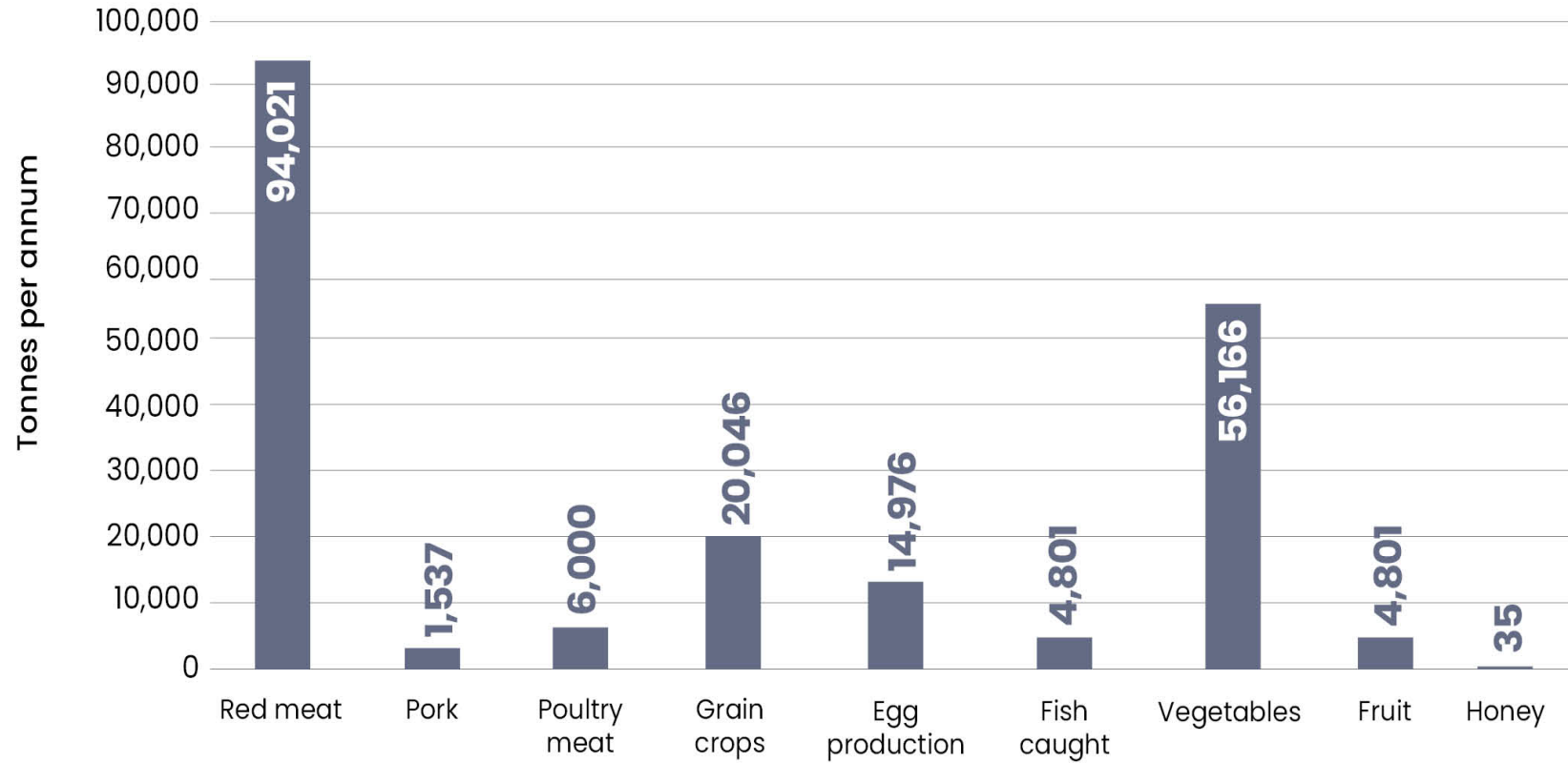
Amount of food produced (kgs) per hectare per year



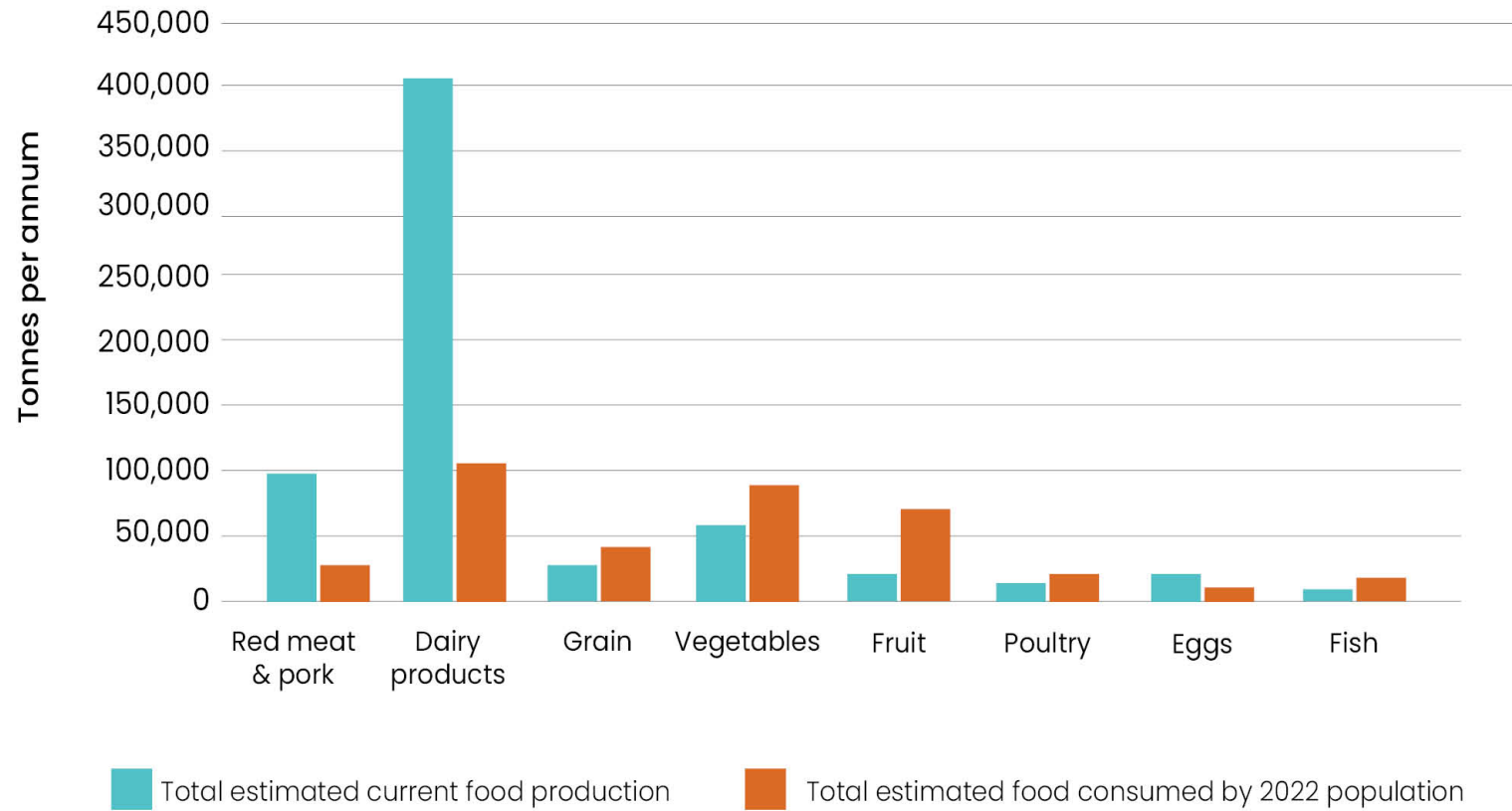
Annual food production from Wellington Region & Horowhenua District



Annual food production from Wellington Region & Horowhenua District (minus milk)



Mass Balance for the Wellington Regional foodshed



A Local Food Economy



Some challenges to selling locally

- Lack of demand
- Outdated/unusable regulations
- Limited growth potential
- Competition with supermarkets
- Infrastructure and sourcing
 - Most of milk and cheese is processed out of the region
 - There is a large pork processing company in our region that imports 92% of their pork to process, with only 8% locally sourced



"Although we supply locally... we need to export to make our business sustainable"

Changes needed to enable the local food economy

- "Assistance with marketing of produce" –challenges of direct-to-consumer sales.
- "Better consumer education"
- "Easier regulations from paddock to plate"
- "Other support (e.g., Government subsidies)"
- "Emphasising the role of local councils and the Ministry for Primary Industries (MPI) in supporting small and local endeavours."

Where we want to go

Our future state of the Regional Food System

Future State	Oranga taiao (healthy environment) Te Taiao is flourishing with healthy soils, seas, freshwater bodies and climate.		
How we'll know we got there	Sustainable/ Agroecology is the norm, powered by a skilled growing workforce	Food production supports biodiverse, thriving ecosystems and high animal welfare	We have a de-carbonised, zero-waste food system operating on 100% renewable energy
Future State	Oranga tangata (healthy people) Tangata are thriving with resilient livelihoods and access to good kai.		
How we'll know we got there	Our food system supports and builds capacity of small/ medium scale and locally owned food operations. They are enabled to access land, produce and distribute good food	All communities can easily access good food, including local and home-grown produce	Strong food literacy across our population and institutions
Future State	Mana motuhake (locally-led) The mana of our region is strong with a self-determined and resilient regional food system.		
How we'll know we got there	Mana whenua are leaders and decision-makers in our regional kai systems	We meet most of our regions kai needs with locally grown and processed kai, before exporting or importing	We invest in, share, and celebrate the kai traditions and stories unique to our region

Next steps

- ✓ Understand baseline
- ✓ Understand where we want to go
- Next Step: what are the actions and collaborations to get us there?



Regional Food System Plan: Phase One Report

Stakeholder/ Partner Engagement, Data and
Baseline Information for Wairarapa-Wellington-
Horowhenua Region

Health New Zealand
Te Whatu Ora
Capital, Coast, Hutt Valley and Wairarapa

What we're excited about

- Mana whenua and Community pilots
 - Markets outside the supermarket: building up small scale, CSA model markets, hyper localising co-ops
 - Building resilience into current models (food banks and hot meals)
 - Youth-led edible cities
 - On-site slaughtering for farmers
 - Sub-regional food hubs (grow, cook, compost)
 - School and council procurement of local food
 - Measuring nutrient density of locally grown food
 - More direct grower-to-consumer connection
- Continuing to work with mana whenua, community, growers, councils, and central government on this mahi



What to ponder...

- What are you excited about? We'd love to hear!
- Who are you supporting when you purchase your food?
- How are you disposing of your food?
- Can you get involved in community initiatives related to food in your neighborhoods?
- If you work in government or other sectors, how can food be integrated—and central-- to your work?
- How will future generations know we have committed to shift our food systems?



Ngā mihi nui

Let's connect!

Tessa.ackerson@huttvalleydhb.org.nz